

**London  
Living Rent**  
Helping you save to buy



# Ark Soane

Acton, W3 8JH

A stunning collection of  
1, 2 and 3 bedroom apartments

**SNG** Sovereign  
Network  
Group



## London Living Rent at **Ark Soane, Acton**

Sovereign Network Group (SNG) is excited to be offering a brand new development of London Living Rent apartments on Mill Hill Road in Acton. The homes will be a mix of one, two and three bedroom homes, designed with the modern renter in mind.



# Rent happy!

## London Living Rent

Helping you save to buy

Do you want to buy a home of your own but are unable to save a deposit because you are renting elsewhere? A London Living Rent home with SNG could be the answer.

# London Living Rent

## A simple guide

London Living Rent offers affordable homes for private rent for middle income earners. Unlike standard year-long rental agreements, we offer longer assured shorthold tenancies of up to three years, to give you peace of mind and security while you save.



**One**  
Find a LLR home that suits you and your needs



**Two**  
Rent your home at a discount



**Three**  
Save the discount for your deposit



**Four**  
Buy shares in your home through Shared Ownership

Discounted rental contracts can be renewed, if needed, for up to 10 years after the launch of each scheme; during which time, you will be able to gradually build up your deposit. When you are ready, you have the option to buy the home you have been renting (or another eligible SNG property) on a Shared Ownership basis. 'When' you buy is flexible. SNG will support you to save during your rental stay, so you can buy at your own pace.

### Is London Living Rent for me?

To be eligible for a London Living Rent home you must:

- ▶ Be renting in London
- ▶ Have a maximum household income of £60,000
- ▶ You must demonstrate the ability to save toward a purchase deposit
- ▶ You must meet lenders general criteria to obtain mortgage finance
- ▶ Be unable to currently buy a home (including through Shared Ownership) in your local area

Priority will be given to applicants who live or work in the London Borough of Hounslow.

**For full details of the eligibility criteria for Ark Soane visit our website at [www.networkhomes.org.uk/londonlivingrent](http://www.networkhomes.org.uk/londonlivingrent)**



### A trusted landlord

SNG has been dedicated to providing quality homes in London since 1974. So when you move in, you can rest assured that we know what we are doing.



### High quality specification

Designed for contemporary lifestyles meeting all your home comfort needs.



### Quality new build homes

Our homes are built to current building regulations, so you can be assured quality standards are met and adhered to.



### Flexible assured shorthold tenancies

You are in control: With assured tenancies of up to three years, you have time to plan for life's changing circumstances, while saving for your next step to homeownership.



### Make it your own

You can afford to put your own stamp on your rental home, safe in the knowledge that this could be your forever home.



### Help to save a deposit

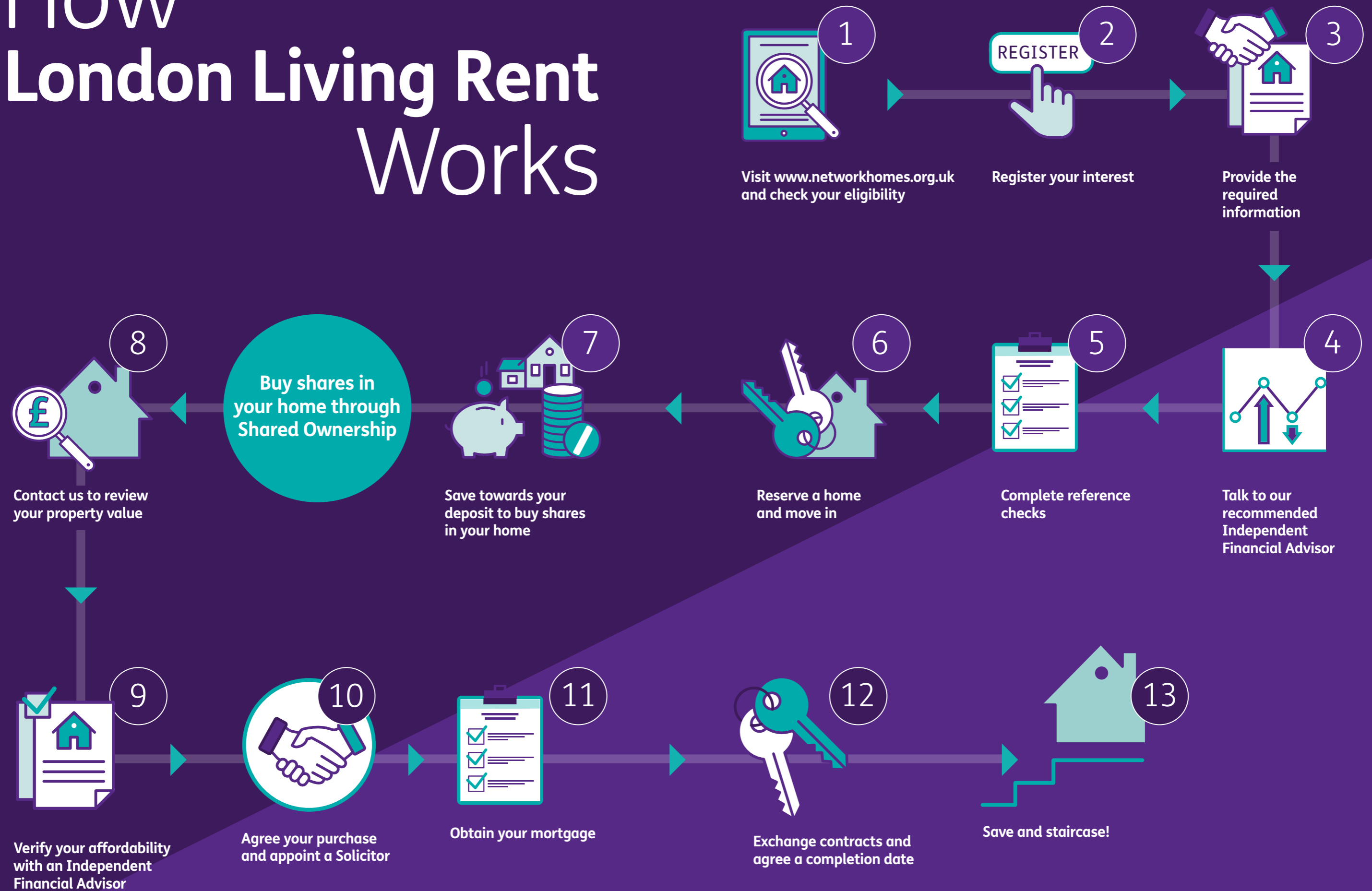
Pay a discounted monthly rent (usually giving a significant discount compared to local market rents) for up to 10 years, to help you save to buy your rented home.



### Buy the home you love!

You have the option to buy your home on a shared ownership basis up to 10 years after the launch of each scheme.

# How London Living Rent Works





**Rent your way!**



## Rent in style! Specification

Your new home at Ark Soane is carefully finished to a high standard. These homes are stylish, convenient and contemporary. Living spaces are open plan with neutral decor running throughout the apartment to create a harmonious living environment.

These modern apartments benefit from a fully fitted bathroom, and a kitchen with brand new integrated Zanussi appliances - perfect for a London Living Renter!



## Designed for modern living

### GENERAL SPECIFICATION

- Grendon Twist, cut plie carpet to bedrooms, hallway and lounge area
- Standard hanging pendant to living/dining area, hallway and bedrooms
- Vinyl matt emulsion paint in a choice of colours
- White painted doors with brushed finish handles
- Audio / Visual security entry phone system to apartments
- Communal digital & satellite services. Sky & SkyQ ready to lounge and bedroom
- Balcony or terrace to all apartments with lighting
- Smoke and heat detectors fitted
- Double glazing throughout

### BATHROOM

- White bathroom suite featuring shower tray or steel bath as appropriate, floor mounted WC, concealed dual flush cistern and semi-recessed basin
- Full height tiling around bath and shower enclosures
- Safety Vinyl flooring
- White downlights with white light LED bulbs
- Chrome heated towel rail
- Shaver socket

### KITCHEN AREA

- 'Grey Wash Oak' non-slip vinyl flooring
- Symphony 'Marble Siroco' Worktop with stainless steel splashback to hob
- Stainless steel sink with 'Origin Chrome' swan neck mixer tap
- Zanussi Stainless Steel Single Oven
- Zanussi Electric Ceramic Hob with integrated extractor unit
- Integrated Zanussi fridge/freezer
- Integrated Zanussi dishwasher
- Free-standing Zanussi washer/dryer. In some apartments this will be located in the utility cupboard
- White, recessed downlights

### BEDROOM(S)

- Fitted grey carpet with underlay
- Pendant light fittings
- BT and TV socket to main bedroom

**Please note:**  
Design elements and specification details may change without notice. Images shown are of a previous SNG show home.

# Ark Soane Site Map



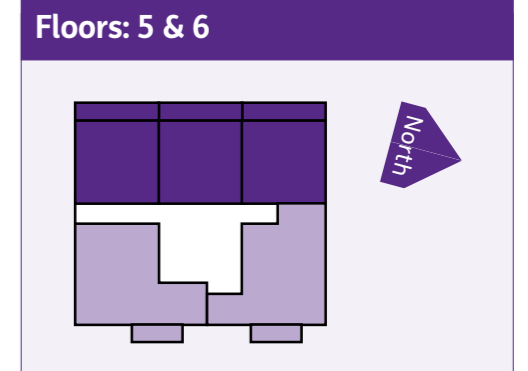
# One Bedroom Apartment

Type C

Plots A5.03, A5.04, A6.03 & A6.04



Room	Metric
Kitchen/Living/Dining	3.61m X 7.35m
Bedroom	3.45m X 3.64m
Bathroom	2.00m X 2.20m
Balcony	7.18m X 1.48m



To note: Development plan is a guide for illustrative purposes only and may be subject to change. Landscaping is indicative only. Map not to scale.

S Store | W Wardrobe

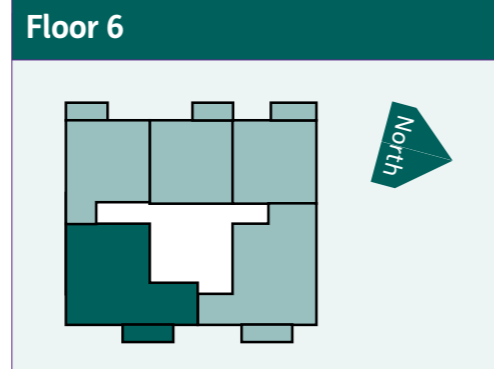


## Two Bedroom Apartment

Type E  
Plot A6.01



Room	Metric
Kitchen/Living/Dining	7.97m X 3.49m
Bedroom 1	3.59m X 4.21m
Bedroom 2	3.59m X 3.81m
Bathroom	2.00m X 2.20m
Balcony	4.70m X 1.50m

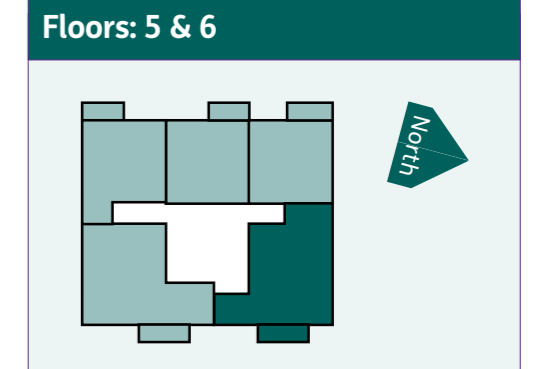


## Two Bedroom Apartment

Type F  
Plots A5.05 & A6.05



Room	Metric
Kitchen/Living/Dining	10.22m X 3.44m
Bedroom 1	3.26m X 3.57m
Bedroom 2	3.26m X 3.57m
Bathroom	2.17m X 2.43m
Balcony	4.70m X 1.50m

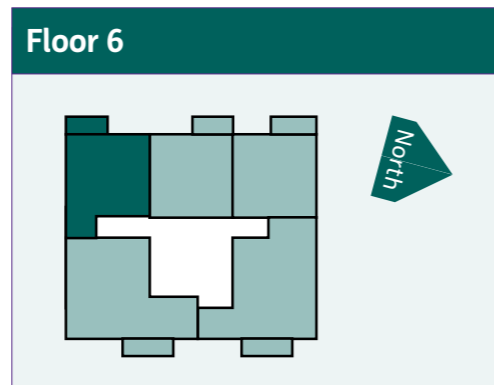


## Two Bedroom Apartment

Type G  
Plot A6.02

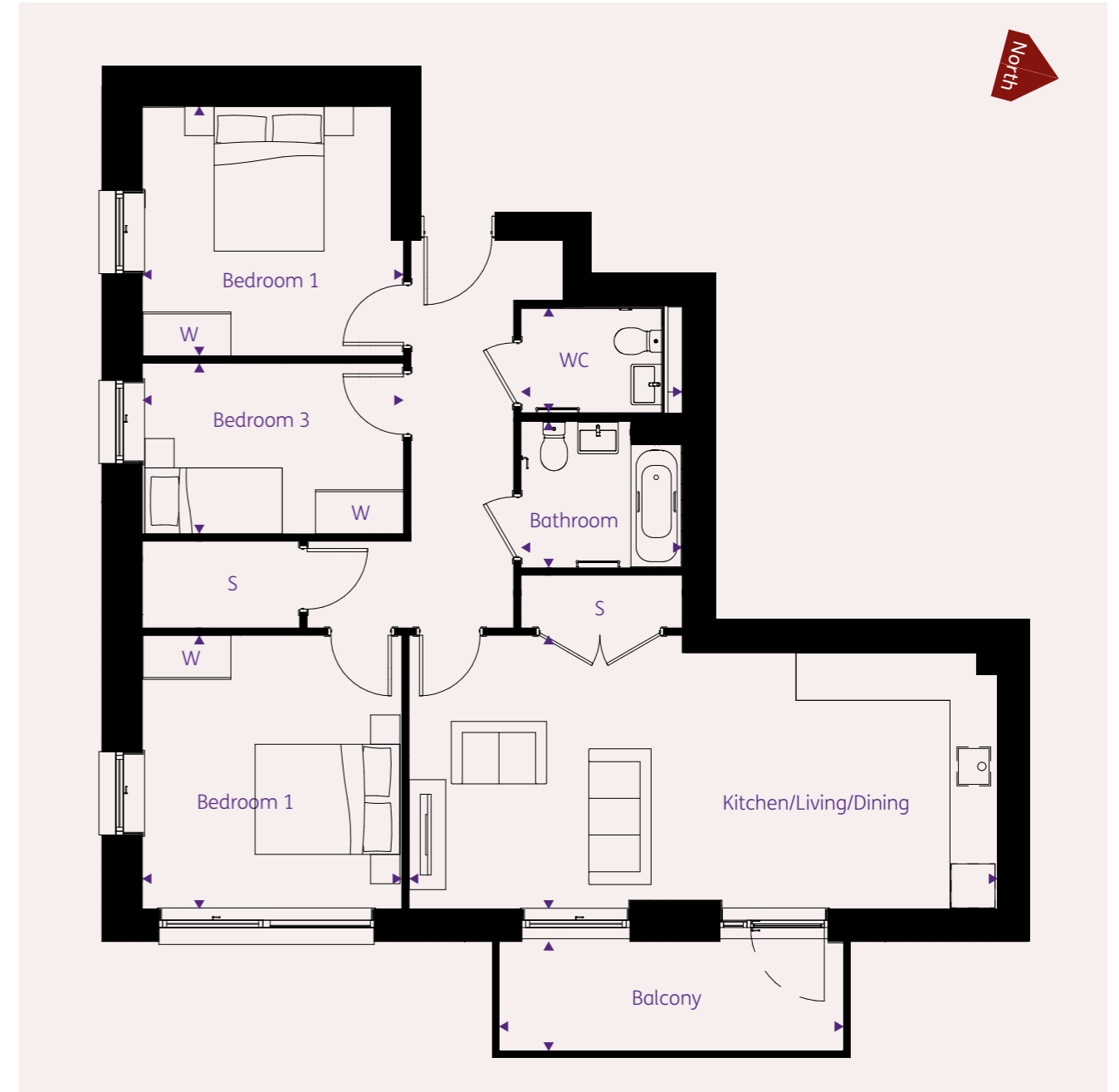


Room	Metric
Kitchen/Living/Dining	7.20m X 3.79m
Bedroom 1	4.04m X 3.41m
Bedroom 2	2.72m X 3.41m
Bathroom	2.00m X 2.20m
Balcony	4.70m X 1.50m

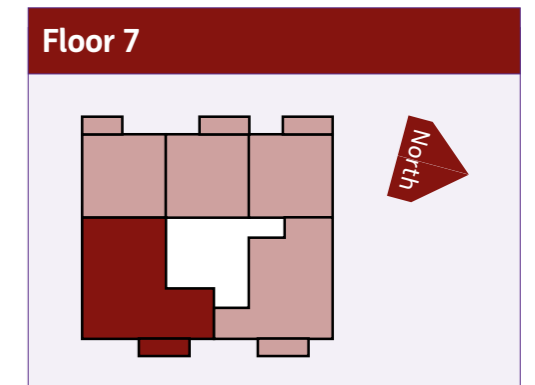


## Three Bedroom Apartment

Type D  
Plot A7.01



Room	Metric
Kitchen/Living/Dining	3.73m X 8.03m
Bedroom 1	3.73m X 3.53m
Bedroom 2	3.40m X 3.56m
Bedroom 3	2.32m X 3.56m
Bathroom	2.00m X 2.20m
Balcony	4.70m X 1.50m



# Sovereign Network Group (SNG)

**SNG was formed in October 2023 through the merger of Sovereign and Network Homes. We provide over 84,000 homes across the South of England, including London.**

We build homes for market sale, Shared Ownership (part rent, part buy) and London Living Rent. We operate commercially but our profits are reinvested back into building affordable homes and offering a first class service to our customers.

We take pride in providing an impressive specification which, coupled with sustainable design features, means our homes are ideal for modern living.

**Everything we earn, we reinvest so that our customers - now and in the future - have a sustainable home in a thriving community.**



**To note:** All computer generated images (CGIs) used in these particulars are for illustrative purposes only, are not intended to provide an actual forecast or impression of the measurements, dimensions, layouts, placements, context and/or finishes of the buildings premises or landscaping within the development, and should not be relied upon as true or accurate. These brief particulars have been prepared and are intended as a guide to supplement an inspection or survey and do not form part of any offer or contract. Their accuracy is not guaranteed. They contain statement of opinion and in some instances we have relied upon information supplied by others. This brochure includes imagery for illustrative purposes only. The map is not to scale. Design elements and specification details may change without notice. You should verify the particulars on your visit to the site and with the sales agent. The particulars do not obviate the need for a survey and all the appropriate enquiries. Accordingly, there shall be no liability as a result of any effort or omission in the particulars or information given. All information believed to be correct at time of print. Travel times are approximate only and are subject to change. August 2023.

## Contact SNG

Visit [networkhomes.org.uk/londonlivingrent](https://networkhomes.org.uk/londonlivingrent)

 @networkhomesuk

 @networkhomesuk

 @networkhomes

**London  
Living Rent**  
Helping you save to buy



Sovereign  
Network  
Group

Formerly



**Network  
Homes**